
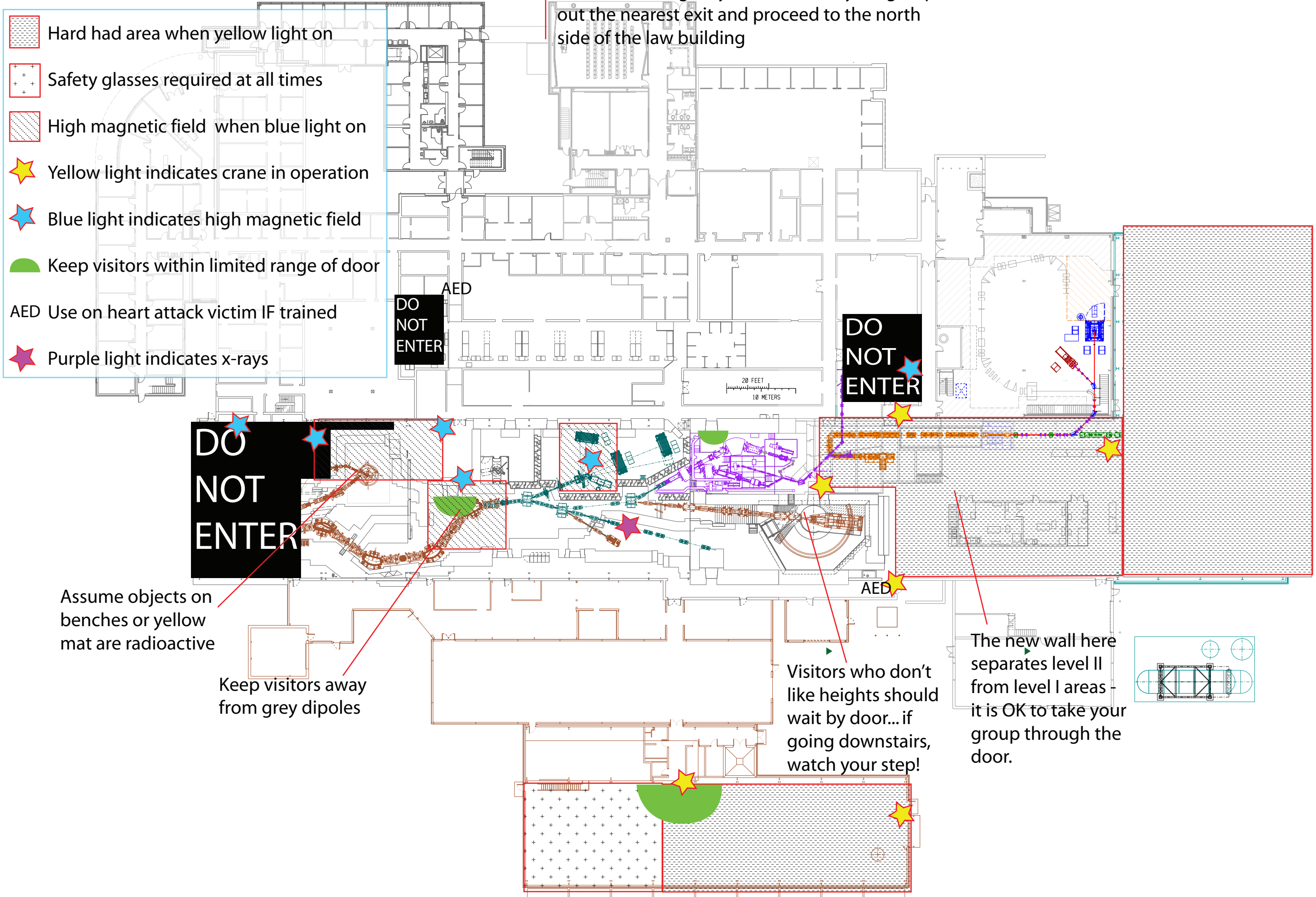


-  Hard had area when yellow light on
-  Safety glasses required at all times
-  High magnetic field when blue light on
-  Yellow light indicates crane in operation
-  Blue light indicates high magnetic field
-  Keep visitors within limited range of door
- AED Use on heart attack victim IF trained
-  Purple light indicates x-rays

In case of emergency (fire, etc), lead your group out the nearest exit and proceed to the north side of the law building



Assume objects on benches or yellow mat are radioactive

Keep visitors away from grey dipoles

Visitors who don't like heights should wait by door...if going downstairs, watch your step!

The new wall here separates level II from level I areas - it is OK to take your group through the door.

