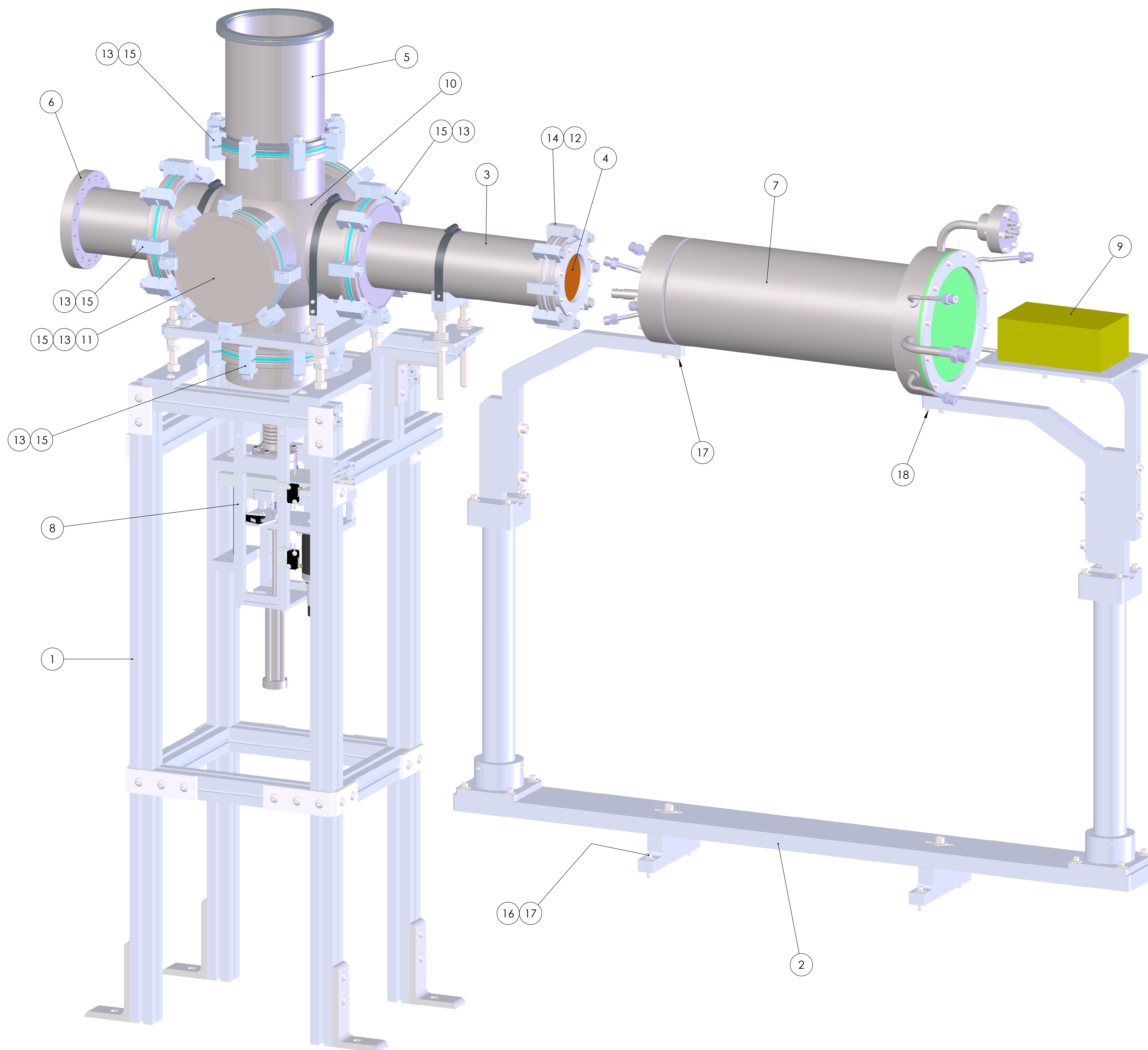


REVISIONS				
REV.	DESCRIPTION	MD WO #	DATE	BY
1	RELEASE OF N3010217-MDE-0001-0006, 0007 & 0008.	W04047-002	22-JUL-2016	PMG
2	RELEASE OF N3010217-MDE-0003-0000. DESIGN CHANGES TO N3010217-MDE-0001-0007. ELIMINATION OF N3010217-MDE-0001-0005. ADDITION OF N3010217-MDE-0001-0003, 0009 & 0010.	W04047-002	26-SEP-2016	PMG



ITEM NO.	PART NUMBER	DESCRIPTION	MATERIAL	QTY.
1	N3010217-MDE-0001-0003	Beamline Equipment Support Stand	ASSEMBLY	1
2	N3010217-MDE-0001-0006	Proton Detector Support	ASSEMBLY	1
3	N3010217-MDE-0001-0007	Beam Tube	WELDMENT	1
4	N3010217-MDE-0001-0008	Beam Window Assembly	ASSEMBLY	1
5	N3010217-MDE-0001-0009	Custom ISO LF Flange Nipple	WELDMENT	1
6	N3010217-MDE-0001-0010	Custom CF to ISO LF Flange Adapter Nipple	WELDMENT	1
7	N3010217-MDE-0002-0000	Proton Detector	ASSEMBLY	1
8	N3010217-MDE-0003-0000	Beam Degradar	ASSEMBLY	1
9	N3010217-MDE-0001_Preamplifier	Preamplifier	Mesytec # MPR-16-L	1
10	MDC-827002	ISO LF Flange Six-Way Cross - NW160	AISI 304	1
11	MDC-812002	ISO LF Flange Blank - NW160, claw-clamp style	AISI 304	2
12	MDC-810001	Centering Ring Assembly for NW100 ISO LF Flange	aluminum & Viton	1
13	MDC_810002	ISO LF NW160 Centering Ring Assembly	aluminum & Viton	6
14	MDC-802000	Double Claw Clamp for NW63 / NW80 / NW100 ISO LF Flange	aluminum & steel	8
15	MDC_802002	Double Claw Clamp for NW160 / NW200 / NW250 ISO LF Flange	aluminum & steel	48
16	Regular FW 0.25-SZP	Flat Washer - 1/4"	STEEL, ZINC PLATED-GRADE 5 MINIMUM	4
17	HX-SHCS 0.25-20x1.25x1.25-N-SBO	Hex Socket Head Cap Screw - 1/4"-20 x 1 1/4" long	STEEL, BLACK OXIDE COATED-GRADE 5 MINIMUM	6
18	HX-SHCS 0.25-20x1.375x1.375-N-SBO	Hex Socket Head Cap Screw - 1/4"-20 x 1 3/8" long	STEEL, BLACK OXIDE COATED-GRADE 5 MINIMUM	2

UNLESS OTHERWISE SPECIFIED:
 DIMENSIONS ARE IN INCHES
 BREAK ALL SHARP EDGES .02 MAX.
 REMOVE ALL BURRS
 30 Deg. CHAMFER ENDS ALL THREADS
 MACHINE SURFACE FINISH

DO NOT SCALE DRAWING

Dimension Tolerances: 1 Place Dec: .010, 2 Place Dec: .015, 3 Place Dec: .005

SCALE: 7:24

DATE: MAY 2016

DRAWN BY: GLENNON

Project / System Reference: Proton Detector Top Assembly

DESCRIPTION: Proton Detector Top Assembly

MATERIAL: STEEL, BLACK OXIDE COATED-GRADE 5 MINIMUM

SIZE: D

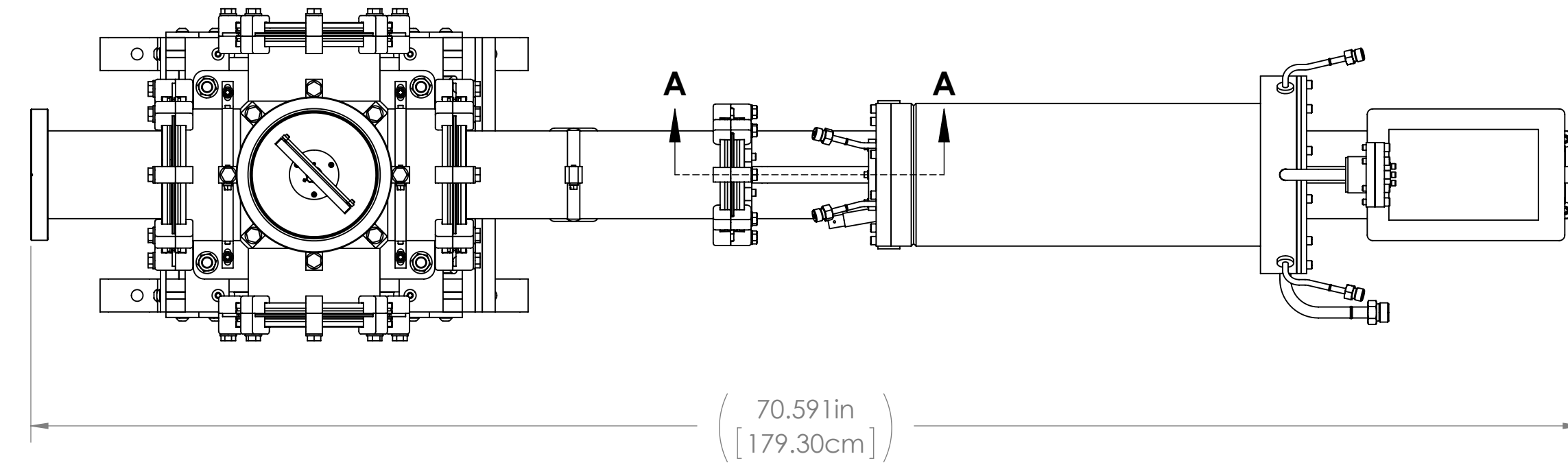
ASSEMBLY

PART # N3010217-MDE-0001-0000

REV 2

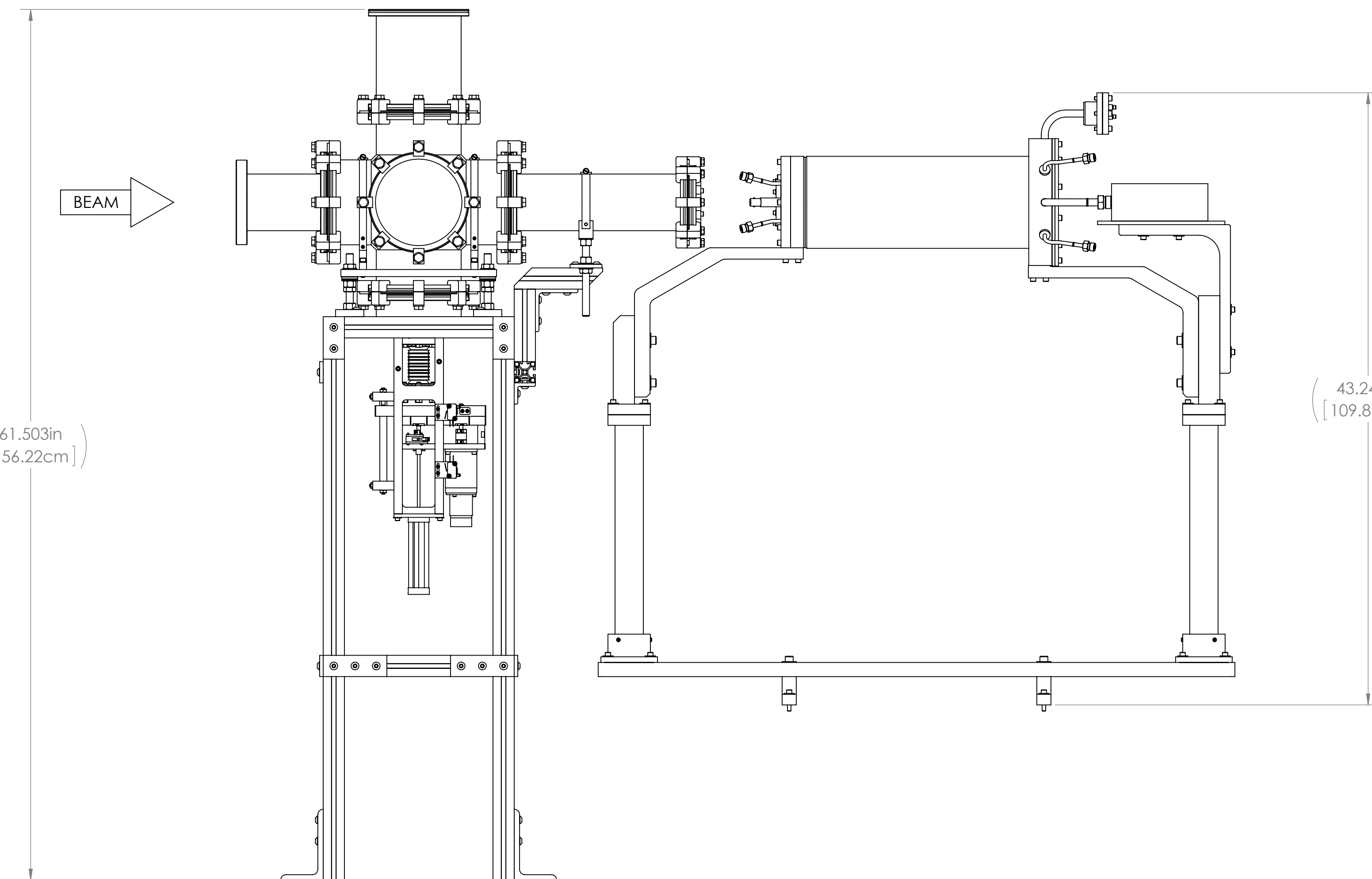
NEXT ASSEMBLY

BEAM



70.591in
[179.30cm]

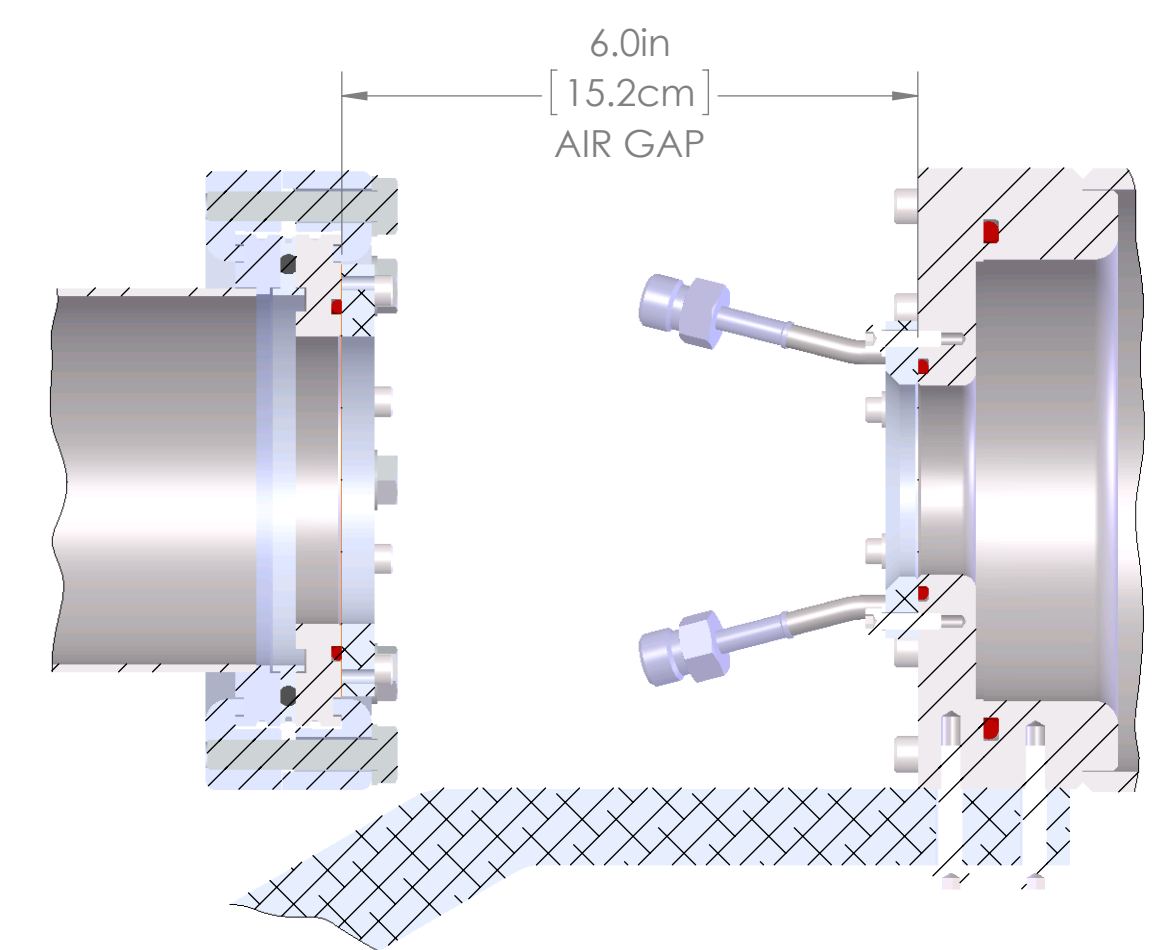
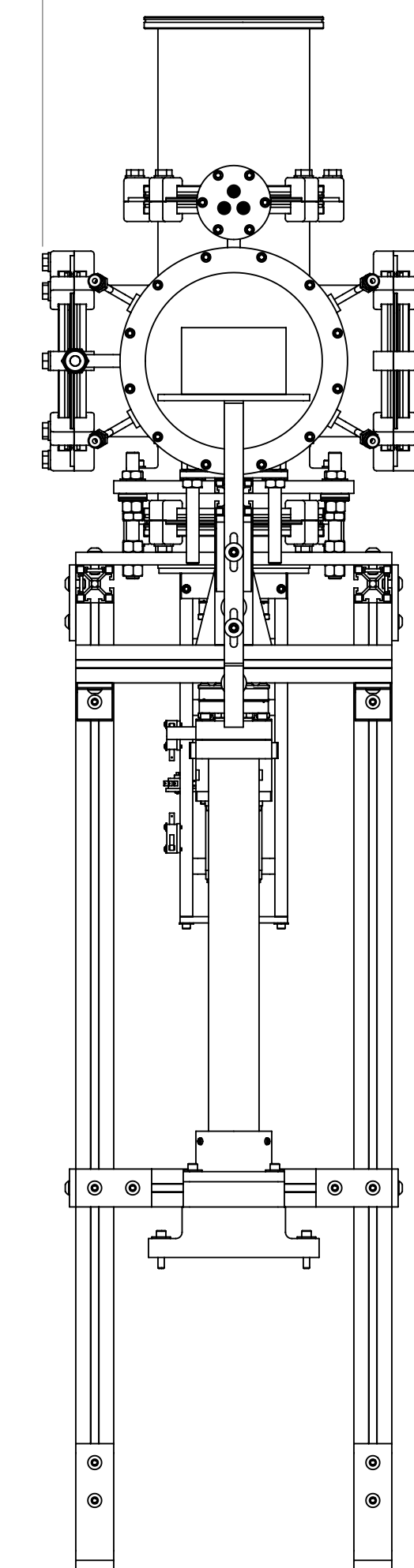
BEAM



61.503in
[156.22cm]

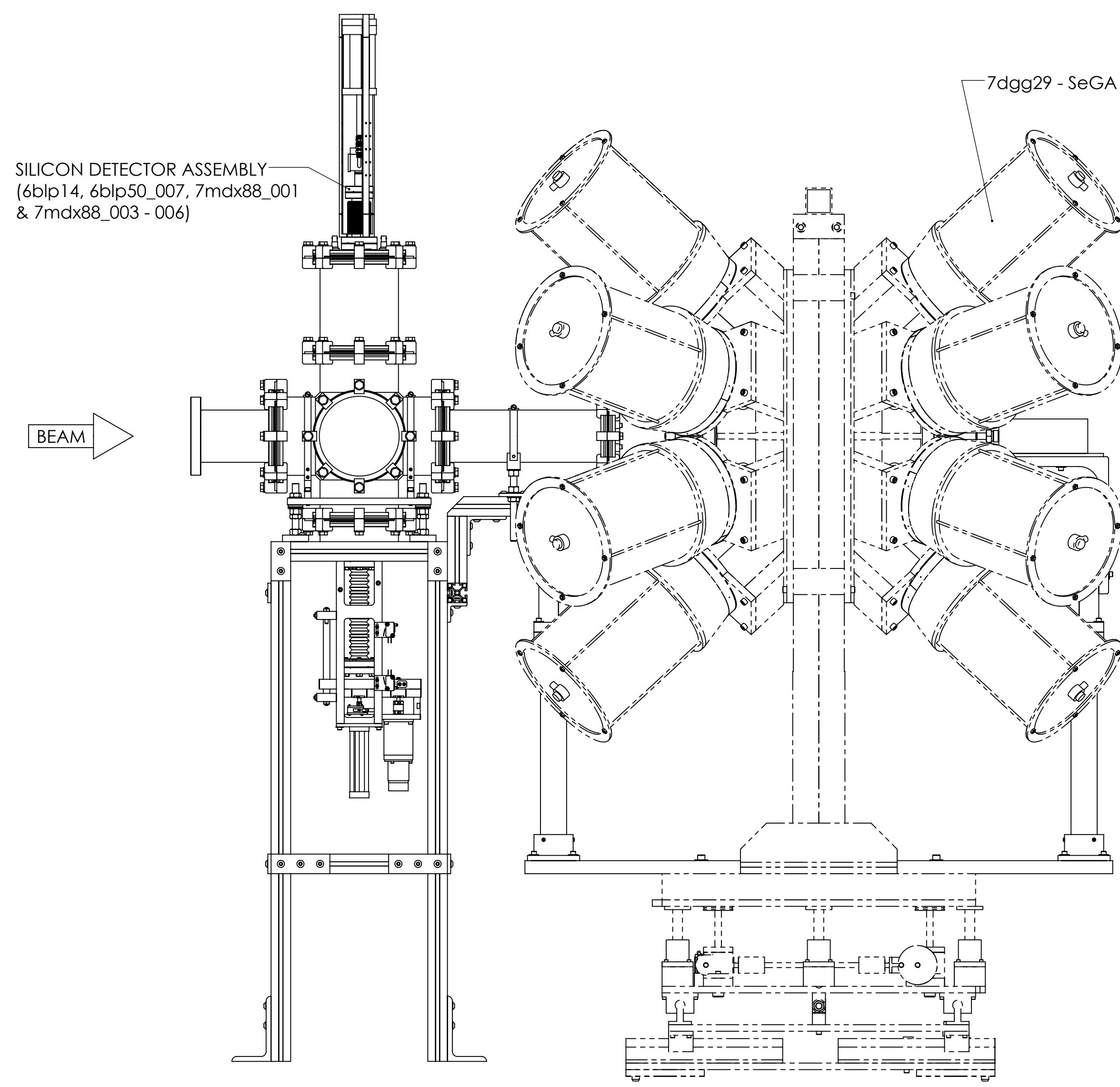
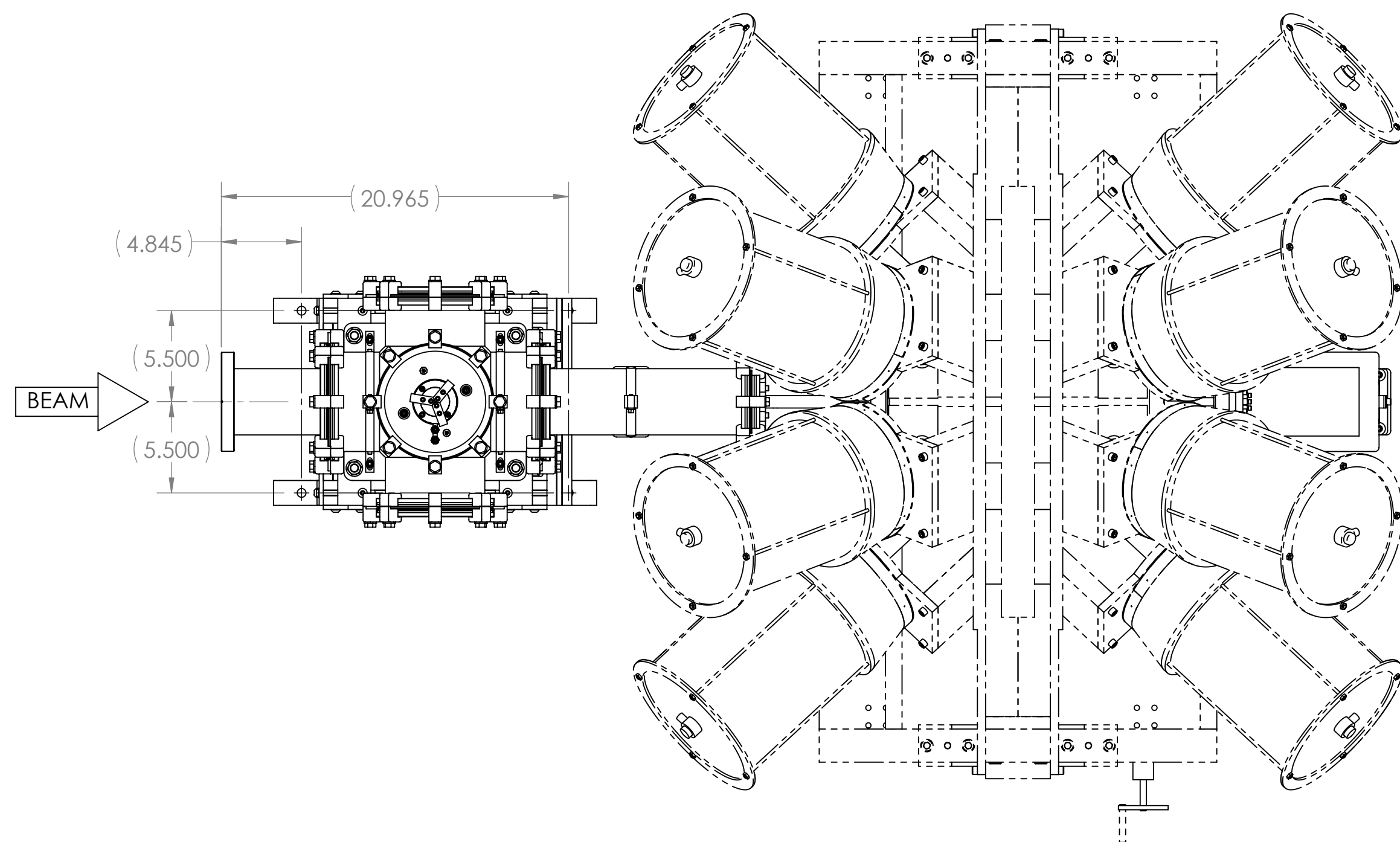
43.243in
[109.84cm]

15.128in
[38.43cm]

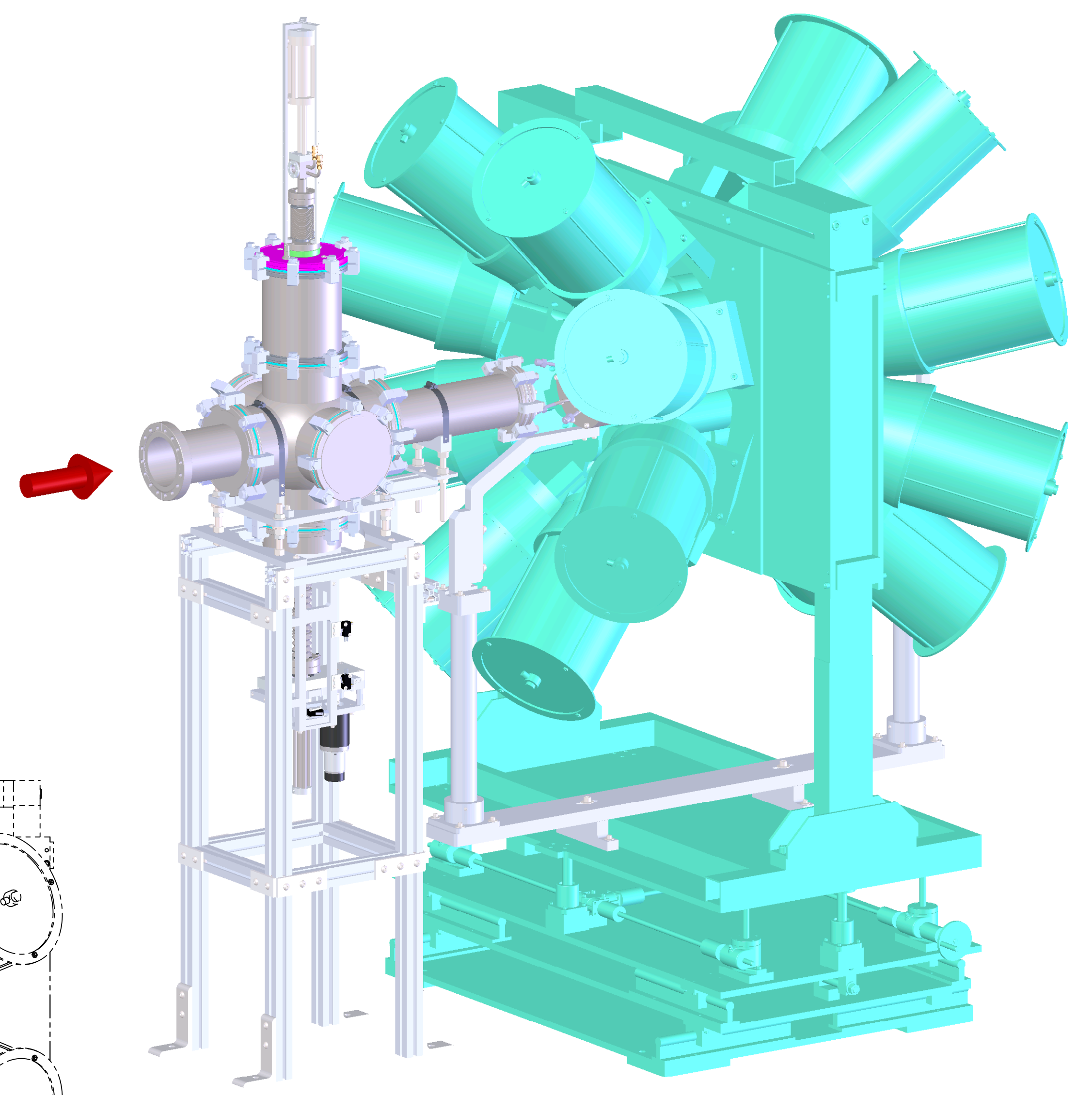
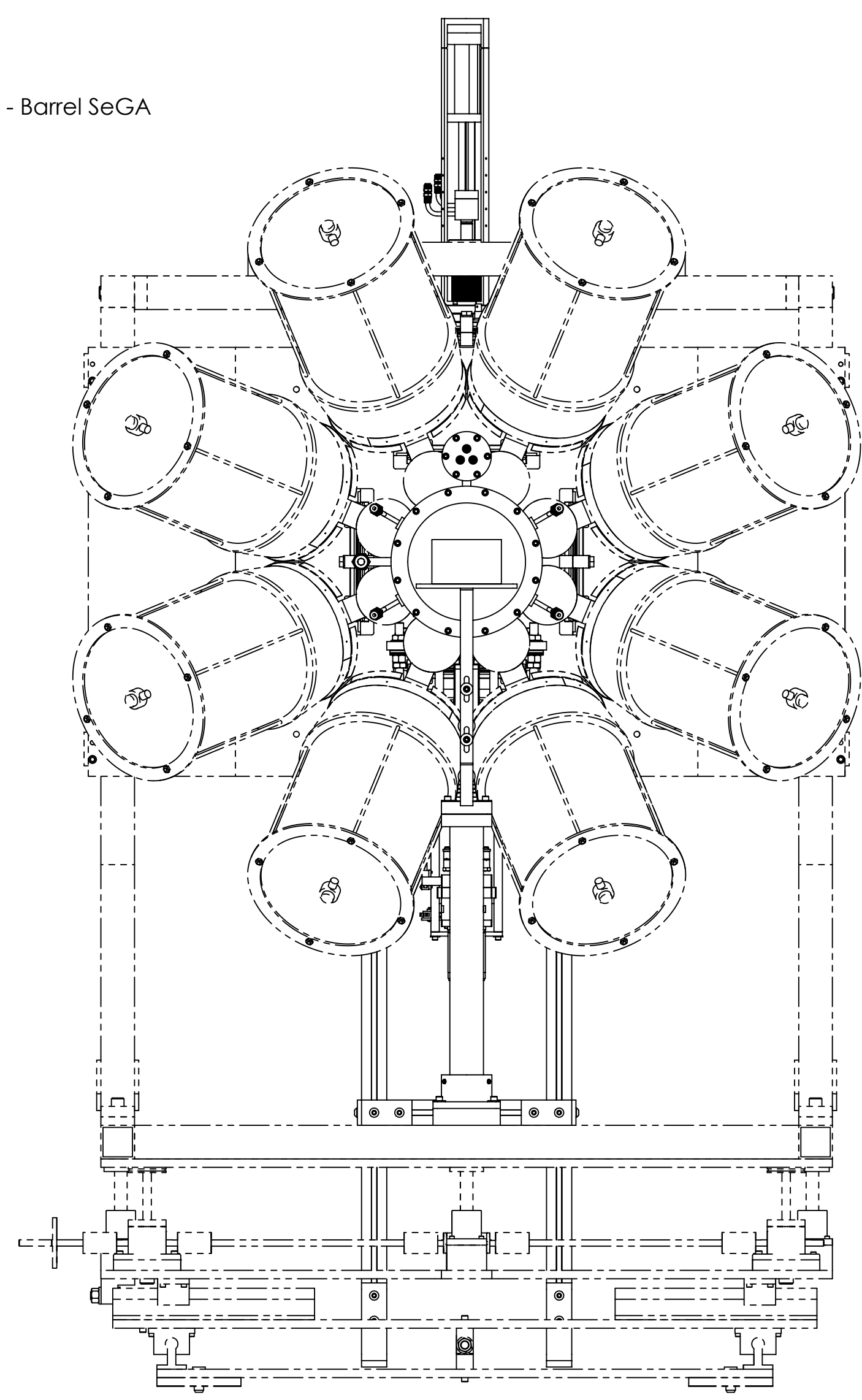


SECTION A-A
SCALE 1 : 2

<p>UNLESS OTHERWISE SPECIFIED: DIMENSIONS ARE IN INCHES BREAK ALL SHARP EDGES .02 MAX. REMOVE ALL BURRS 30 Deg. CHAMFER ENDS ALL THREADS MACHINE SURFACE FINISH</p>		<p>National Superconducting Cyclotron Laboratory MICHIGAN STATE UNIVERSITY - East Lansing, Michigan</p>	
<p>DO NOT SCALE DRAWING</p>		<p>DRAWN BY: GLENNON DATE: MAY 2016 SCALE: 1:6 SIZE: D</p>	
<p>Dimension Tolerances</p> <p>1 Place Dec: ±.020 2 Place Dec: ±.010 3 Place Dec: ±.005 "Stock" Angles: ±.5°</p>		<p>Project / System Reference Proton Detector Top Assembly</p> <p>DESCRIPTION Proton Detector Top Assembly</p> <p>PART # N3010217-MDE-0001-0000</p>	
<p>XXXXX</p>	<p>NEXT ASSEMBLY</p>	<p>REV 2</p>	<p>SHEET 2 OF 3</p>



7dgg29 - SeGA 16 Detector Array - Barrel SeGA



UNLESS OTHERWISE SPECIFIED: DIMENSIONS ARE IN INCHES BREAK ALL SHARP EDGES .02 MAX. REMOVE ALL BURRS 30 Deg. CHAMFER ENDS ALL THREADS MACHINE SURFACE FINISH		 National Superconducting Cyclotron Laboratory MICHIGAN STATE UNIVERSITY - East Lansing, Michigan	
DO NOT SCALE DRAWING		DRAWN BY	Project / System Reference
Dimension Tolerances 1 Place Dec: ±.020 2 Place Dec: ±.010 3 Place Dec: ±.005 "Stock" Angles: ±.5°		DATE	DESCRIPTION
XXXXX	SCALE	MAY 2016	Proton Detector Top Assembly
NEXT ASSEMBLY	SIZE	D	Proton Detector Top Assembly
	MATERIAL	ASSEMBLY	PART # N3010217-MDE-0001-0000
			REV 2