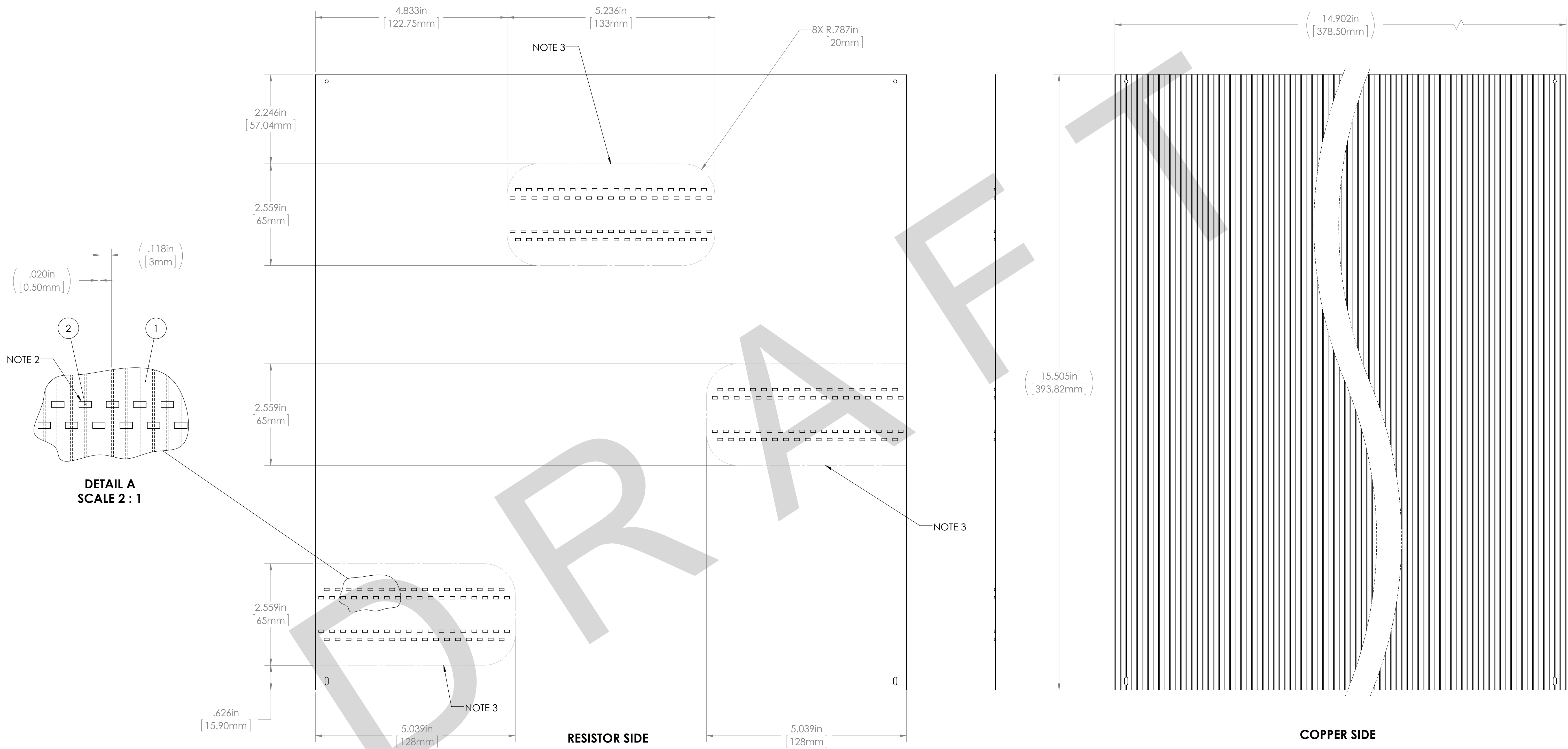


| REVISIONS | | | | |
|-----------|-------------|---------|------|----|
| REV. | DESCRIPTION | MD WO # | DATE | BY |
| 1 | Released | | | |



NOTE(S):

- SOLDER RESISTORS ONTO NON-COPPER COATED SIDE OF SHEET.
- INSTALL RESISTORS SUCH THAT THEY BRIDGE BETWEEN ADJACENT COPPER BANDS.
- ARRANGE RESISTORS AS SHOWN, KEEPING THEM WITHIN THE SKETCHED BOUNDARIES.
- TOTAL EFFECTIVE ELECTRICAL RESISTANCE BETWEEN END 'A' & END 'B' MUST READ _____ MegaOhms ± _____ MegaOhms.

| ITEM NO. | PART NUMBER | DESCRIPTION | MATERIAL | QTY. |
|----------|----------------------------|-------------------------------|-----------------|------|
| 1 | N3010217-MDE-0002-0044 | Electrode Sheet | Kapton & copper | 1 |
| 2 | N3010217-MDE-0002_Resistor | Resistor - Ohmcraft # HVC1206 | --- | 214 |

UNLESS OTHERWISE SPECIFIED:
 DIMENSIONS ARE IN INCHES
 BREAK ALL SHARP EDGES .02 MAX.
 REMOVE ALL BURRS
 30 Deg. CHAMFER ENDS ALL THREADS
 MACHINE SURFACE FINISH

DO NOT SCALE DRAWING

Dimension Tolerances

| | |
|--------------------|------------|
| 1 Place Dec: ±.010 | SCALE: 4:1 |
| 2 Place Dec: ±.015 | DATE: XXXX |
| 3 Place Dec: ±.005 | SIZE: D |
| Angles: ±.5° | |

N3010217-MDE-0002-0003
 NEXT ASSEMBLY

National Superconducting Cyclotron Laboratory
 MICHIGAN STATE UNIVERSITY - East Lansing, Michigan

Project / System Reference
Proton Detector

DESCRIPTION
Field Cage

PART #
N3010217-MDE-0002-0009

REV
1