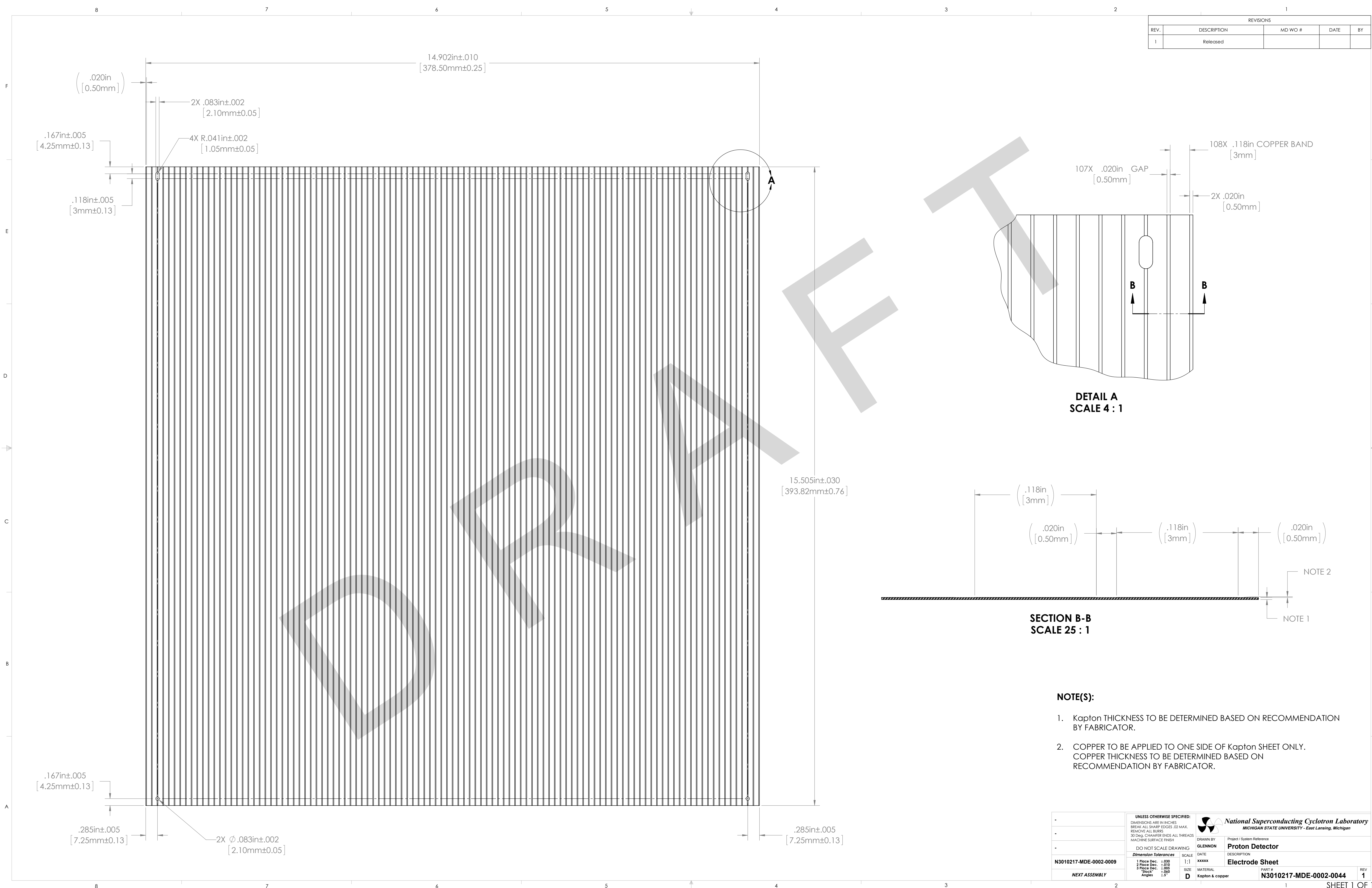


REVISIONS				
REV.	DESCRIPTION	MD WO #	DATE	BY
1	Released			



- NOTE(S):**
1. Kapton THICKNESS TO BE DETERMINED BASED ON RECOMMENDATION BY FABRICATOR.
 2. COPPER TO BE APPLIED TO ONE SIDE OF Kapton SHEET ONLY. COPPER THICKNESS TO BE DETERMINED BASED ON RECOMMENDATION BY FABRICATOR.

UNLESS OTHERWISE SPECIFIED: DIMENSIONS ARE IN INCHES BREAK ALL SHARP EDGES .02 MAX. REMOVE ALL BURRS 30 Deg. CHAMFER ENDS ALL THREADS MACHINE SURFACE FINISH		 National Superconducting Cyclotron Laboratory MICHIGAN STATE UNIVERSITY - East Lansing, Michigan	
DO NOT SCALE DRAWING		DRAWN BY GLENN	Project / System Reference Proton Detector
Dimension Tolerances 1 Place Dec: ± .005 2 Place Dec: ± .010 3 Place Dec: ± .005 "Stock" Angles: ± .5°		DATE XXXX	DESCRIPTION Electrode Sheet
N3010217-MDE-0002-0009 NEXT ASSEMBLY		SCALE 1:1	MATERIAL Kapton & copper PART # N3010217-MDE-0002-0044 REV 1